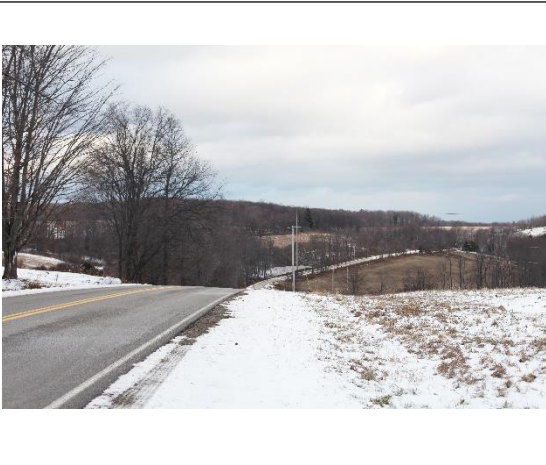




VIEWPOINT LOCATION MAP



PROPOSED CONDITIONS



TECHNICAL INFORMATION

<i>Viewpoint Coordinates in NY C State Plane feet</i>	521129.6 E 795566.8 N
<i>Viewpoint Location</i>	Greenwood, NY
<i>Viewer Elevation (ft msl)</i>	2343
<i>Distance to Project</i>	0.22 miles
<i>Camera Model</i>	Canon 5D Full Frame
<i>Lens Setting</i>	50 mm
<i>Date/Time</i>	12.8.2016/4:43 pm

**EIGHT POINT WIND  
STEUBEN AND ALLEGANY COUNTY  
NEW YORK  
PHOTOSIMULATION**

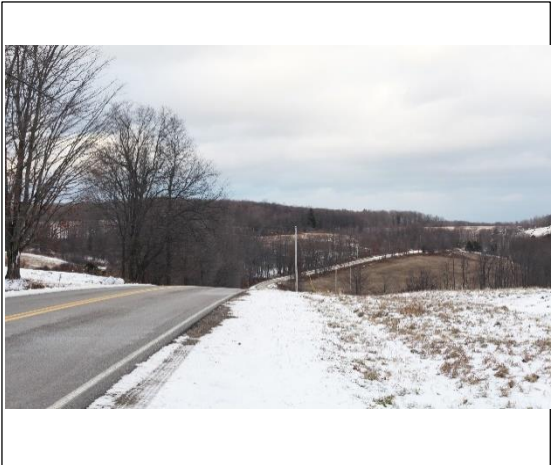




VIEWPOINT LOCATION MAP



EXISTING CONDITIONS



TECHNICAL INFORMATION

<i>Viewpoint Coordinates in NY C State Plane feet</i>	521129.6 E 795566.8 N
<i>Viewpoint Location</i>	Greenwood, NY
<i>Viewer Elevation (ft msl)</i>	2343
<i>Distance to Project</i>	0.22 miles
<i>Camera Model</i>	Canon 5D Full Frame
<i>Lens Setting</i>	50 mm
<i>Date/Time</i>	12.8.2016/4:43 pm

EIGHT POINT WIND  
STEUBEN AND ALLEGANY COUNTY  
NEW YORK  
PHOTOSIMULATION

FIGURE 4.4-2: VP1 COUNTY ROAD 62 - GREENWOOD

PROPOSED CONDITIONS







VIEWPOINT LOCATION MAP



PROPOSED CONDITIONS



TECHNICAL INFORMATION

<i>Viewpoint Coordinates in NY C State Plane feet</i>	522530.9 E 786317.0 N
<i>Viewpoint Location</i>	Greenwood, NY
<i>Viewer Elevation (ft msl)</i>	2317.9
<i>Distance to Project</i>	1644 feet
<i>Camera Model</i>	Canon 5D Full Frame
<i>Lens Setting</i>	50 mm
<i>Date/Time</i>	4.5.2017/2:09 pm

**EIGHT POINT WIND  
STEUBEN AND ALLEGANY COUNTY  
NEW YORK  
PHOTOSIMULATION**

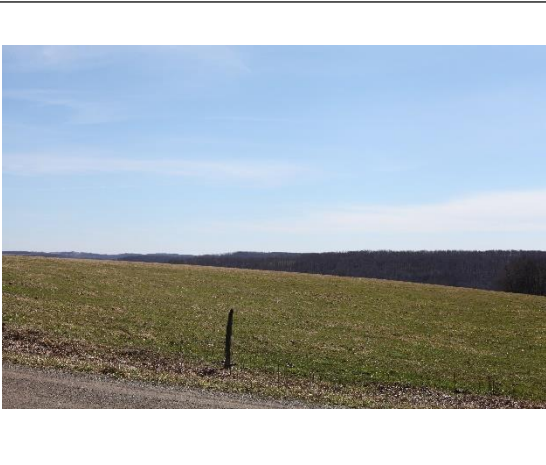




VIEWPOINT LOCATION MAP



EXISTING CONDITIONS



TECHNICAL INFORMATION

<i>Viewpoint Coordinates in NY C State Plane feet</i>	522530.9 E 786317.0 N
<i>Viewpoint Location</i>	Greenwood, NY
<i>Viewer Elevation (ft msl)</i>	2317.9
<i>Distance to Project</i>	1644 feet
<i>Camera Model</i>	Canon 5D Full Frame
<i>Lens Setting</i>	50 mm
<i>Date/Time</i>	4.5.2017/2:09 pm

**EIGHT POINT WIND  
STEUBEN AND ALLEGANY COUNTY  
NEW YORK  
PHOTOSIMULATION**





VIEWPOINT LOCATION MAP



PROPOSED CONDITIONS



TECHNICAL INFORMATION

<i>Viewpoint Coordinates in NY C State Plane feet</i>	521650.2 E 786285.6 N
<i>Viewpoint Location</i>	Kelly Road
<i>Viewer Elevation (ft msl)</i>	2214
<i>Distance to Project</i>	112 ft
<i>Camera Model</i>	Canon 5D Full Frame
<i>Lens Setting</i>	50 mm
<i>Date/Time</i>	12.7.2016/3:47 pm

**EIGHT POINT WIND  
STEUBEN AND ALLEGANY COUNTY  
NEW YORK  
PHOTOSIMULATION**

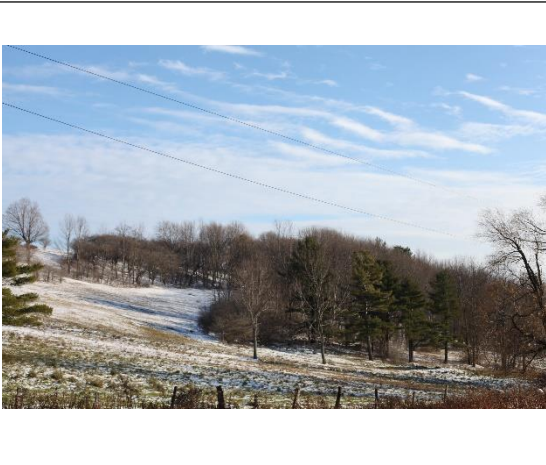




VIEWPOINT LOCATION MAP



EXISTING CONDITIONS



TECHNICAL INFORMATION

<i>Viewpoint Coordinates in NY C State Plane feet</i>	521650.2 E 786285.6 N
<i>Viewpoint Location</i>	Kelly Road
<i>Viewer Elevation (ft msl)</i>	2214
<i>Distance to Project</i>	112 ft
<i>Camera Model</i>	Canon 5D Full Frame
<i>Lens Setting</i>	50 mm
<i>Date/Time</i>	12.7.2016/3:47 pm

**EIGHT POINT WIND  
STEUBEN AND ALLEGANY COUNTY  
NEW YORK  
PHOTOSIMULATION**





VIEWPOINT LOCATION MAP



PROPOSED CONDITIONS



TECHNICAL INFORMATION

<i>Viewpoint Coordinates in NY C State Plane feet</i>	530391.7 E 841878.9 N
<i>Viewpoint Location</i>	Hornellsville, NY
<i>Viewer Elevation (ft msl)</i>	1123.1
<i>Distance to Project</i>	838 ft
<i>Camera Model</i>	Canon 5D Full Frame
<i>Lens Setting</i>	50 mm
<i>Date/Time</i>	12.6.2016/10:43 am

**EIGHT POINT WIND  
STEUBEN AND ALLEGANY COUNTY  
NEW YORK  
PHOTOSIMULATION**





VIEWPOINT LOCATION MAP



EXISTING CONDITIONS



TECHNICAL INFORMATION

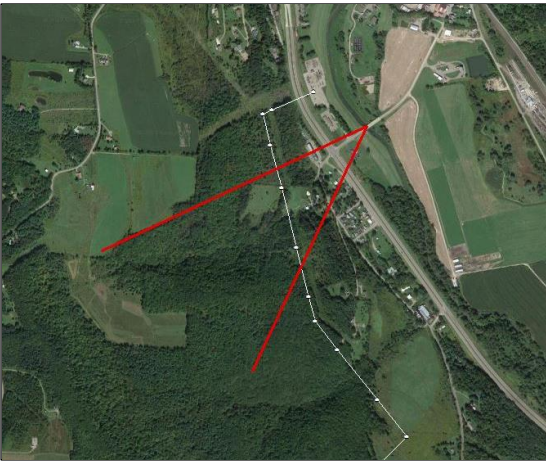
<i>Viewpoint Coordinates in NY C State Plane feet</i>	530391.7 E 841878.9 N
<i>Viewpoint Location</i>	Hornellsville, NY
<i>Viewer Elevation (ft msl)</i>	1123.1
<i>Distance to Project</i>	838 ft
<i>Camera Model</i>	Canon 5D Full Frame
<i>Lens Setting</i>	50 mm
<i>Date/Time</i>	12.6.2016/10:43 am

**EIGHT POINT WIND  
STEUBEN AND ALLEGANY COUNTY  
NEW YORK  
PHOTOSIMULATION**





VIEWPOINT LOCATION MAP



PROPOSED CONDITIONS



TECHNICAL INFORMATION

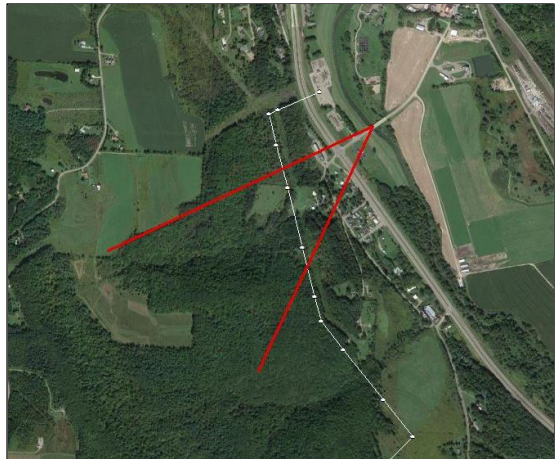
Viewpoint Coordinates in NY C State Plane feet	530391.7 E 841878.9 N
Viewpoint Location	Hornellsville, NY
Viewer Elevation (ft msl)	1123.1
Distance to Project	0.25 miles
Camera Model	Canon 5D Full Frame
Lens Setting	50 mm
Date/Time	12.6.2016/10:44 am

**EIGHT POINT WIND  
STEBEN AND ALLEGANY COUNTY  
NEW YORK  
PHOTOSIMULATION**





#### VIEWPOINT LOCATION MAP



#### EXISTING CONDITIONS



#### TECHNICAL INFORMATION

Viewpoint Coordinates in NY C State Plane feet	530391.7 E 841878.9 N
Viewpoint Location	Hornellsville, NY
Viewer Elevation (ft msl)	1123.1
Distance to Project	0.25 miles
Camera Model	Canon 5D Full Frame
Lens Setting	50 mm
Date/Time	12.6.2016/10:44 am

**EIGHT POINT WIND  
STEUBEN AND ALLEGANY COUNTY  
NEW YORK  
PHOTOSIMULATION**

FIGURE 4.4-6: FVP25 COUNTY ROAD 64, CANISTEO RIVER - HORNELLSVILLE

PROPOSED CONDITIONS