

PROPOSED TRANSMISSION LINE

TRANSMISSION LINE HALF MILE STUDY AREA

CANISTEGO RIVER

FEDERAL/STATE RECREATIONAL LAND

NYSDEC FISHING EASEMENT

LOCAL RESOURCE

1

SIMULATION VIEWPOINT

POTENTIAL VISIBILITY (50 FT TREE HEIGHT)

No. of Structures

1 - 3

4 - 6

7 - 10

>10

0

0.25

0.5

1

Miles

Base Map: USGS Topo
TNM Base Map server
(Latest update: 8/2016)

Sheet 1 of 2

NEXtera

ENERGY

RESOURCES

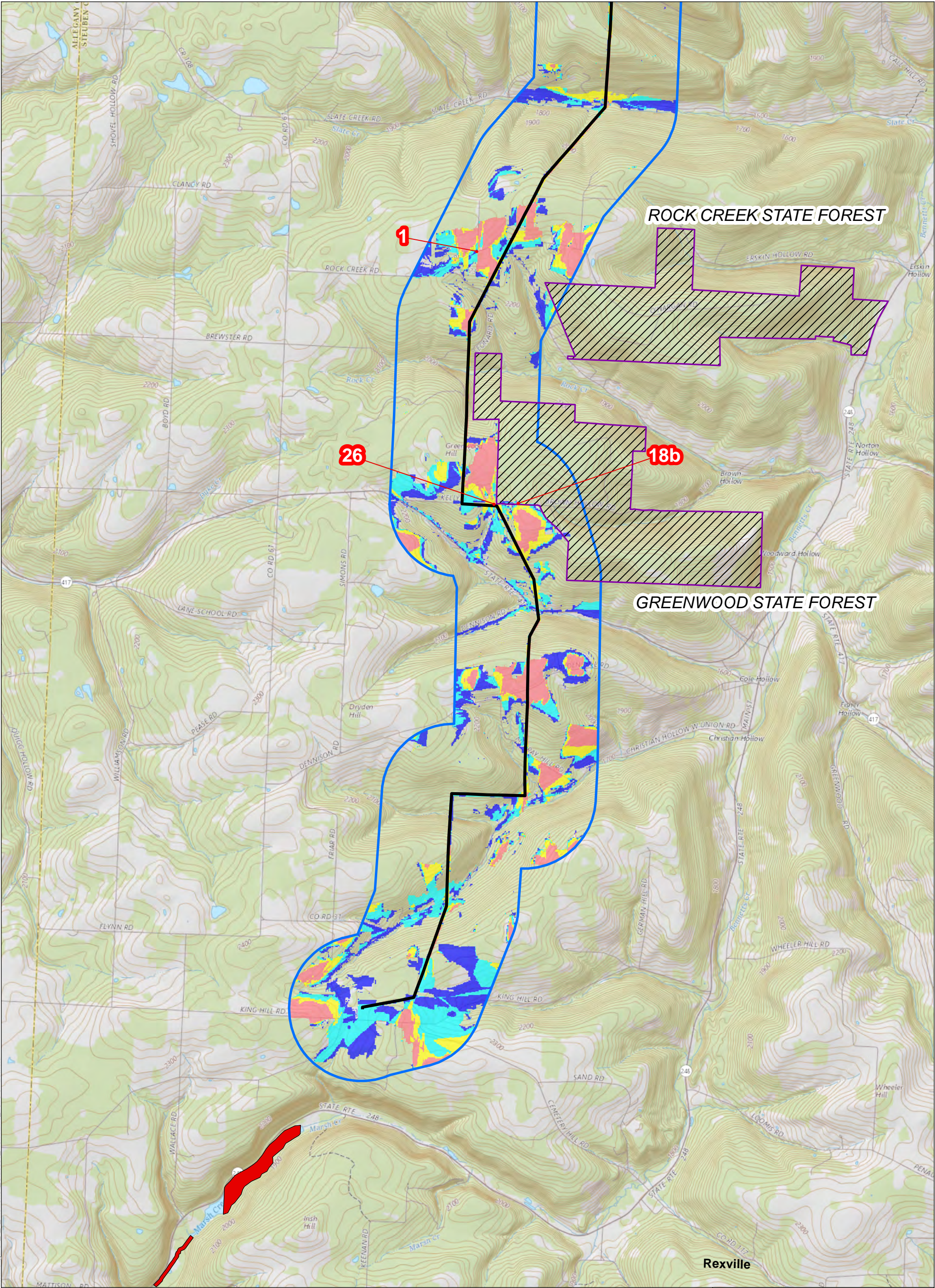
Eight Point Wind, LLC

Figure 4.4-1
Viewshed Map - Transmission Visibility

Modified:
2/1/2018

TRC

10 Maxwell Dr # 200
Clifton Park, NY 12065



PROPOSED TRANSMISSION LINE

TRANSMISSION LINE HALF MILE STUDY AREA

CANISTEO RIVER

FEDERAL/STATE RECREATIONAL LAND

NYSDEC FISHING EASEMENT

LOCAL RESOURCE

1

SIMULATION VIEWPOINT

POTENTIAL VISIBILITY (50 FT TREE HEIGHT)

No. of Structures

1 - 3

4 - 6

7 - 10

>10

0

0.25

0.5

1

Miles

0

0.25

0.5

1

Miles

Base Map: USGS Topo
TNM Base Map server
(Latest update: 8/2016)

Sheet 2 of 2

NEXtera

ENERGY

RESOURCES

Eight Point Wind, LLC

Figure 4.4-1
Viewshed Map - Transmission Visibility

Modified:
2/1/2018

CTRC

10 Maxwell Dr # 200
Clifton Park, NY 12065