

- 1** SIMULATION VIEWPOINT
- CANISTEO RIVER
- FEDERAL/STATE RECREATIONAL LAND
- NYSDEC FISHING EASEMENT
- LOCAL RESOURCE
- SNOWMOBILE TRAIL (PUBLISHED)
- ALLEGANY CO. SCENIC DRIVES
- Mid-County Scenic Drive
- Sky Tour Scenic Drive
- Wildlife Scenic Drive

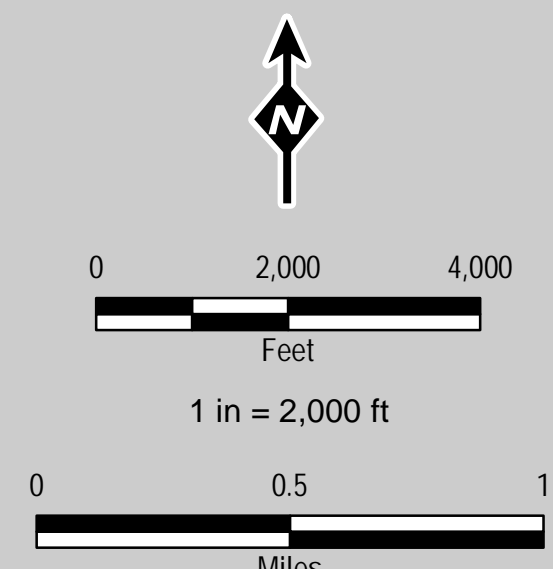
- BIKE ROUTES**
- State Bikeway 17
- State Bikeway 19
- TRC NEWLY IDENTIFIED ELIGIBLE HISTORIC PREVIOUSLY LISTED HISTORIC SITE (CRIS)
- Listed
- Eligible
- 0.5 DISTANCE ZONE
- 0.5 - 4 MILES DISTANCE ZONE
- TURBINE FIVE MILE STUDY AREA
- TURBINE TEN MILE STUDY AREA

- PROPOSED TURBINE**
- GE 3.4
- GE 2.3
- PROPOSED COLLECTOR SUBSTATION
- TRANSMISSION LINE HALF MILE STUDY AREA
- TURBINE VISIBILITY BLADE TIP (50 FT TREE HEIGHT)**
- No. of Turbines
- 1 - 8
- 9 - 20
- 21 - 35

- LANDSCAPE SIMILARITY ZONES**
- 1, Agriculture/Open Field
- 2, Forested
- 3, Developed
- 4, Ridge/Plateau =>2200'
- 5, Open Water

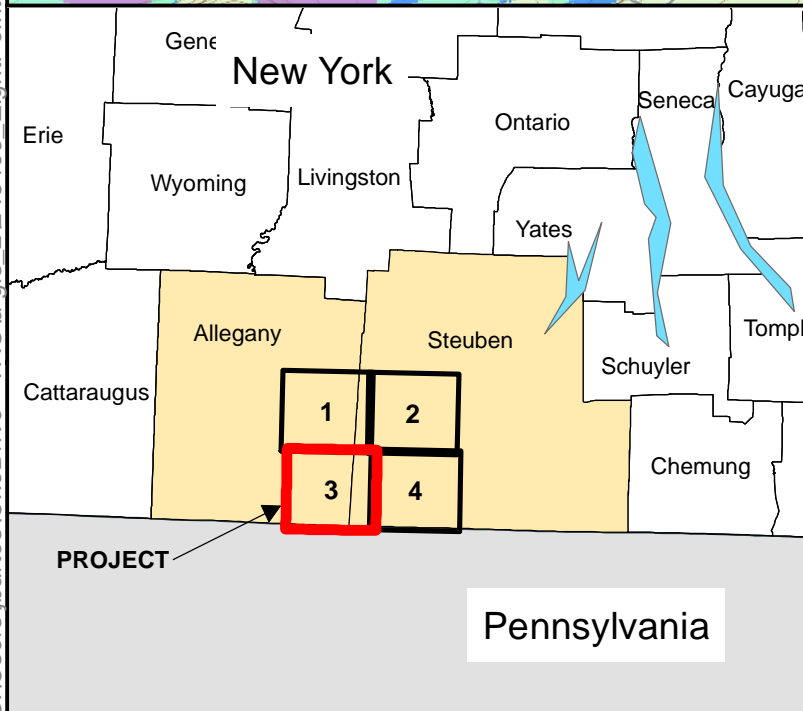
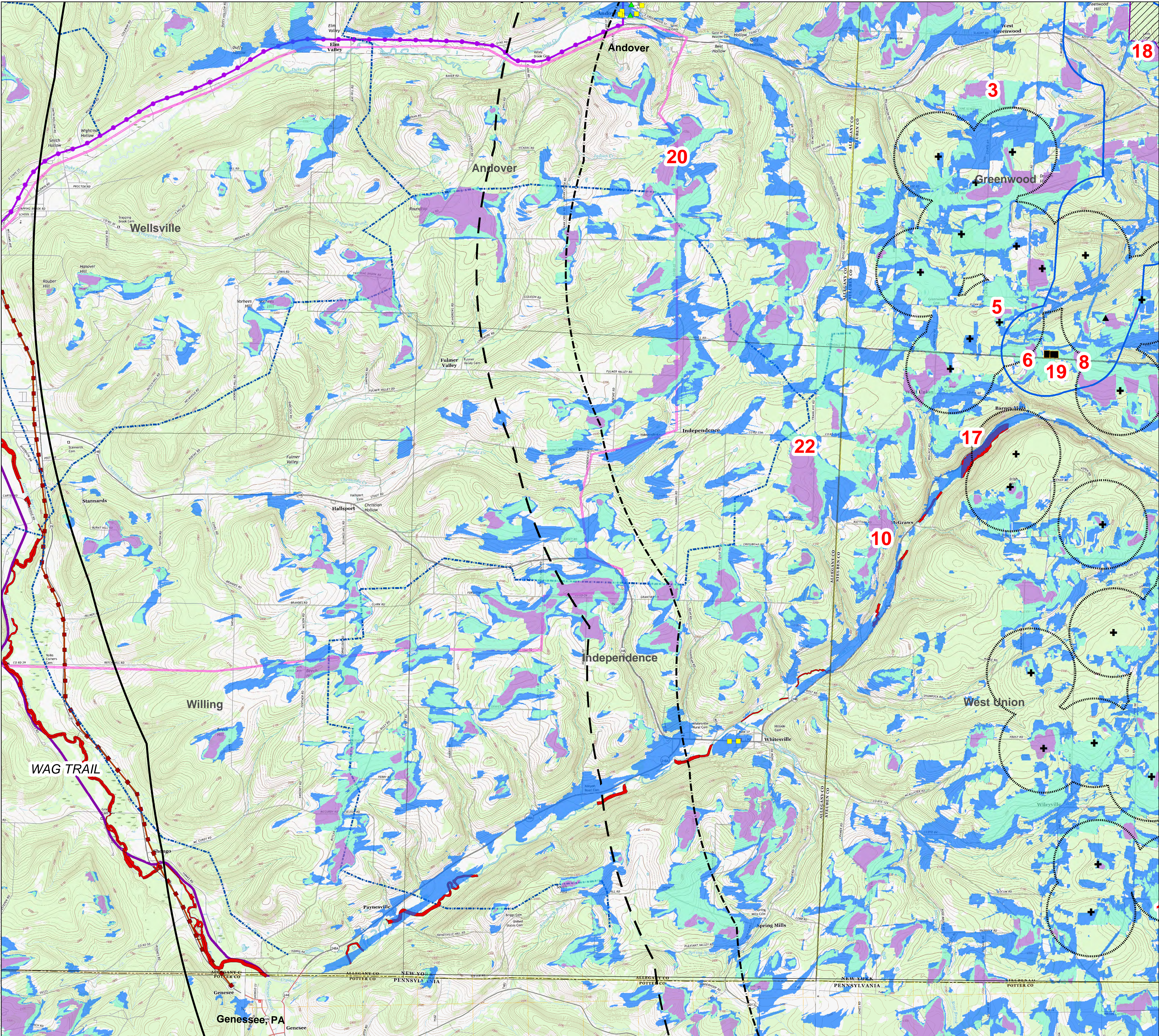
Base Map: USGS Topo
(Latest update:2016)

SHEET 1 of 4



Eight Point
Wind Energy Center

Figure 8
1:24,000 Scale Map
Blade Tip Viewshed Analysis with Trees
& Visual Resources



- 1 SIMULATION VIEWPOINT
- CANISTEO RIVER
- FEDERAL/STATE RECREATIONAL LAND
- NYSDEC FISHING EASEMENT
- LOCAL RESOURCE
- SNOWMOBILE TRAIL (PUBLISHED)
- ALLEGANY CO. SCENIC DRIVES
 - Mid-County Scenic Drive
 - Sky Tour Scenic Drive
 - Wildlife Scenic Drive

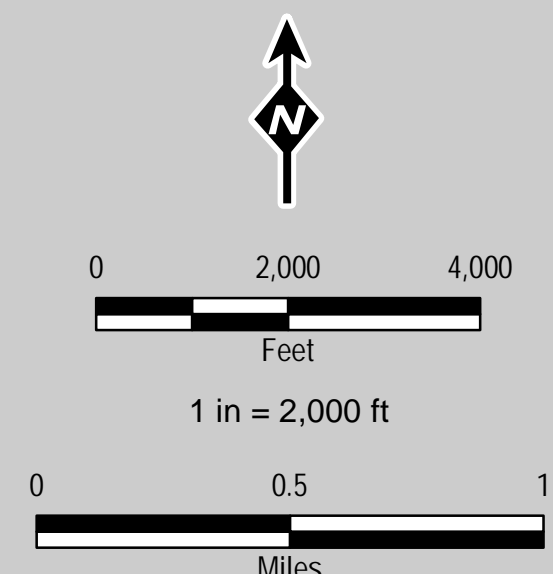
- BIKE ROUTES
 - State Bikeway 17
 - State Bikeway 19
- TRC NEWLY IDENTIFIED ELIGIBLE HISTORIC PREVIOUSLY LISTED HISTORIC SITE (CRIS)
 - Listed
 - Eligible
- TURBINE VISIBILITY BLADE TIP (50 FT TREE HEIGHT)
 - 0.5 DISTANCE ZONE
 - 0.5 - 4 MILES DISTANCE ZONE
 - TURBINE FIVE MILE STUDY AREA
 - TURBINE TEN MILE STUDY AREA

- PROPOSED TURBINE
 - GE 3.4
 - GE 2.3
- PROPOSED COLLECTOR SUBSTATION
- TRANSMISSION LINE HALF MILE STUDY AREA
- No. of Turbines
 - 1 - 8
 - 9 - 20
 - 21 - 35

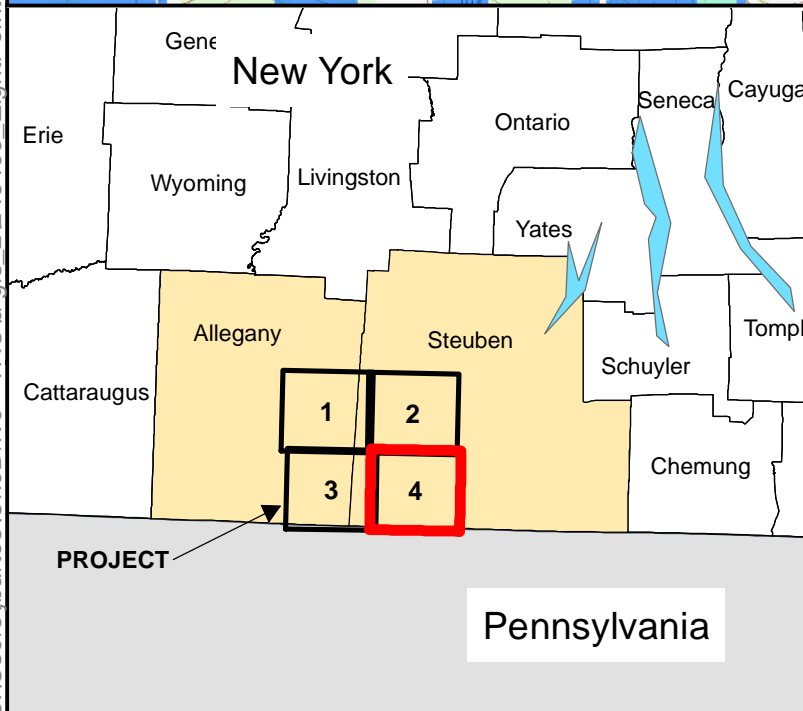
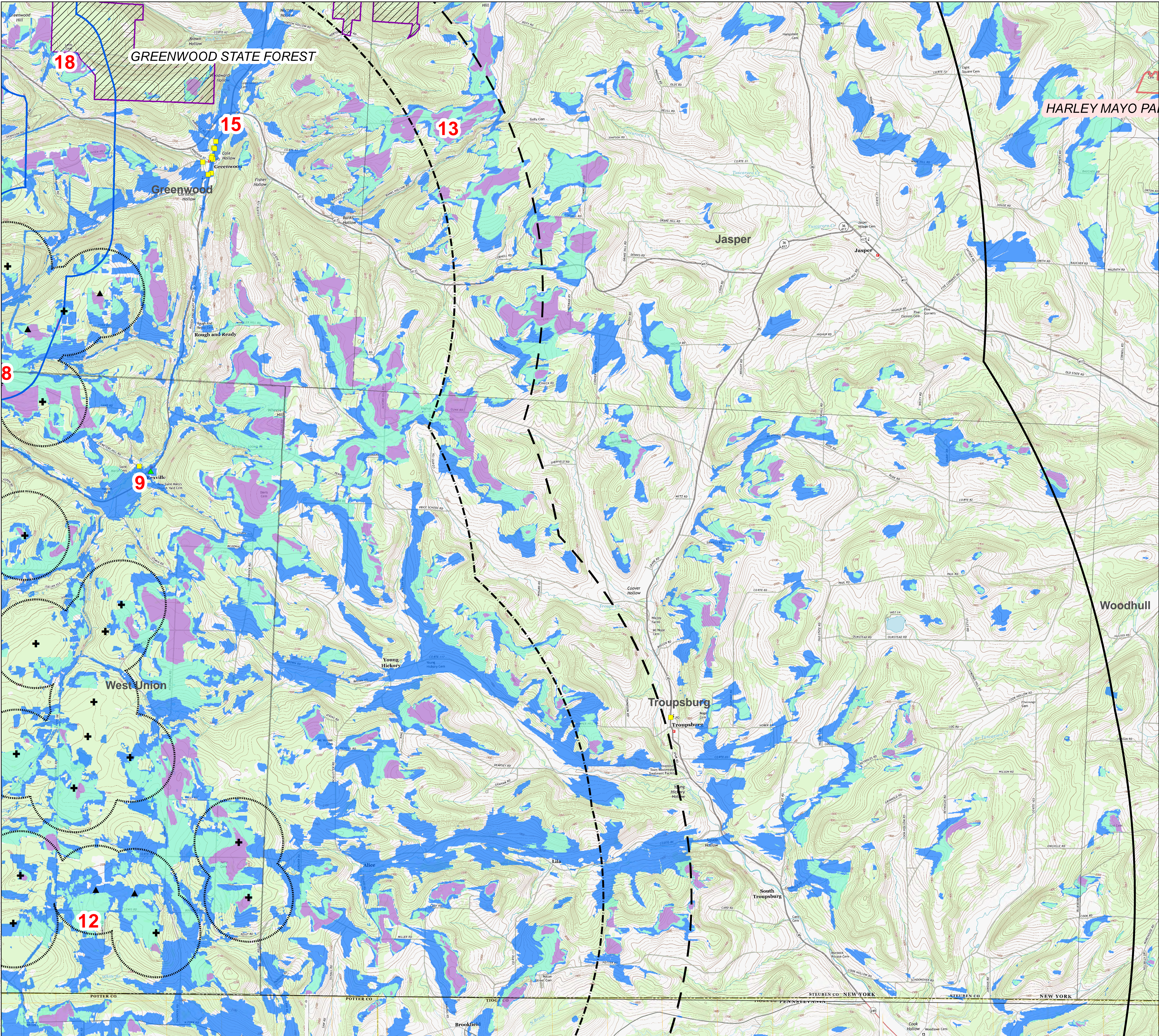
- LANDSCAPE SIMILARITY ZONES
 - 1, Agriculture/Open Field
 - 2, Forested
 - 3, Developed
 - 4, Ridge/Plateau =>2200'
 - 5, Open Water

Base Map: USGS Topo
(Latest update:2016)

SHEET 3 of 4



Eight Point
Wind Energy Center
Figure 8
1:24,000 Scale Map
Blade Tip Viewshed Analysis with Trees
& Visual Resources



- 1 SIMULATION VIEWPOINT
- CANISTEO RIVER
- FEDERAL/STATE RECREATIONAL LAND
- NYSDEC FISHING EASEMENT
- LOCAL RESOURCE
- SNOWMOBILE TRAIL (PUBLISHED)
- ALLEGANY CO. SCENIC DRIVES
 - Mid-County Scenic Drive
 - Sky Tour Scenic Drive
 - Wildlife Scenic Drive

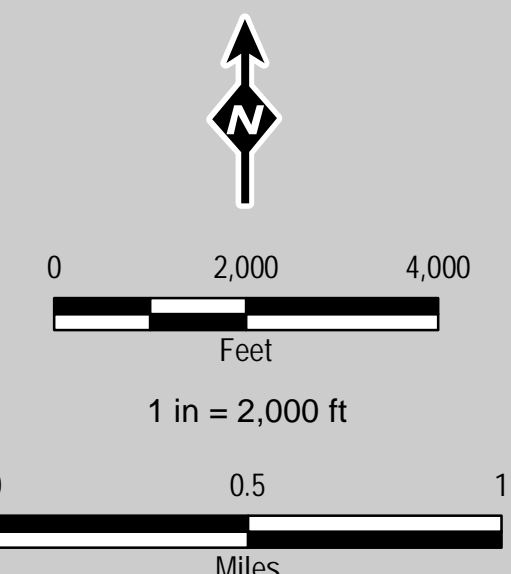
- BIKE ROUTES
 - State Bikeway 17
 - State Bikeway 19
- TRC NEWLY IDENTIFIED ELIGIBLE HISTORIC PREVIOUSLY LISTED HISTORIC SITE (CRIS)
 - Listed
 - Eligible
- 0.5 DISTANCE ZONE
- 0.5 - 4 MILES DISTANCE ZONE
- TURBINE FIVE MILE STUDY AREA
- TURBINE TEN MILE STUDY AREA

- PROPOSED TURBINE
 - GE 3.4
 - GE 2.3
- PROPOSED COLLECTOR SUBSTATION
- TRANSMISSION LINE HALF MILE STUDY AREA
- TURBINE VISIBILITY BLADE TIP (50 FT TREE HEIGHT)
 - No. of Turbines
 - 1 - 8
 - 9 - 20
 - 21 - 35

- LANDSCAPE SIMILARITY ZONES
 - 1, Agriculture/Open Field
 - 2, Forested
 - 3, Developed
 - 4, Ridge/Plateau >=2200'
 - 5, Open Water

Base Map: USGS Topo (Latest update:2016)

SHEET 4 of 4



Eight Point
Wind Energy Center

Figure 8
1:24,000 Scale Map
Blade Tip Viewshed Analysis with Trees
& Visual Resources