

Legend

- 2.3 MW Proposed Turbine Location
- 3.43 MW Proposed Turbine Location
- Permanent Meteorological Towers
- Project Area
- Collection Substation
- O&M Building
- Laydown Yard
- Overhead Collection Line
- Underground Collection Line
- Proposed Access Road
- NY County
- Town Boundary

Towns of Greenwood & West Union
Steuben County, New York

Sources: ESRI, USGS, TRC, NextEra

0 1,000 2,000
Feet
1 inch = 2,000 feet

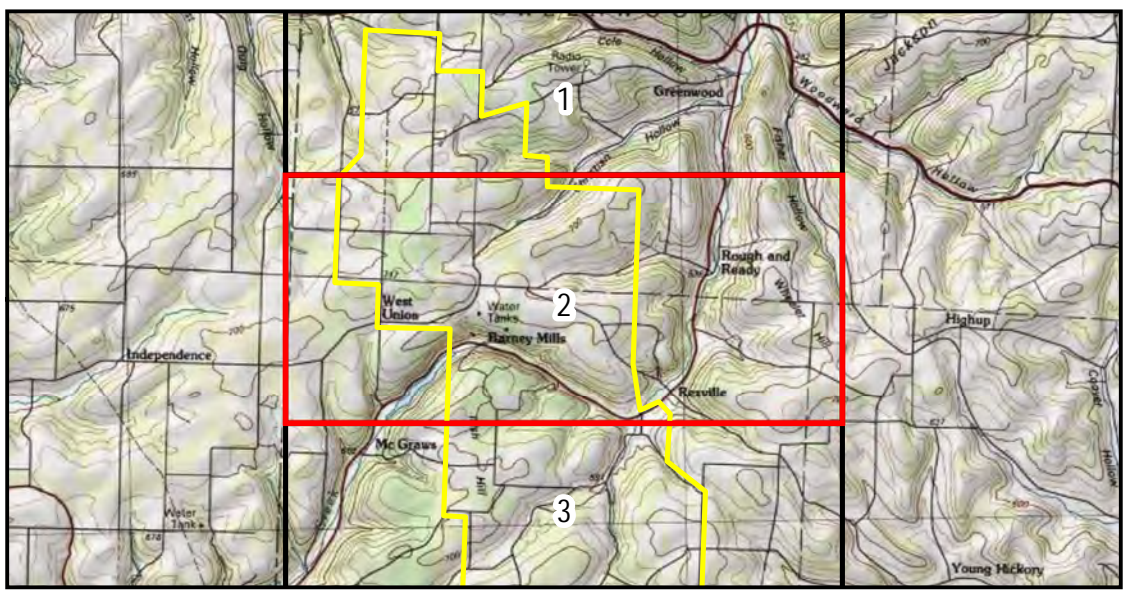
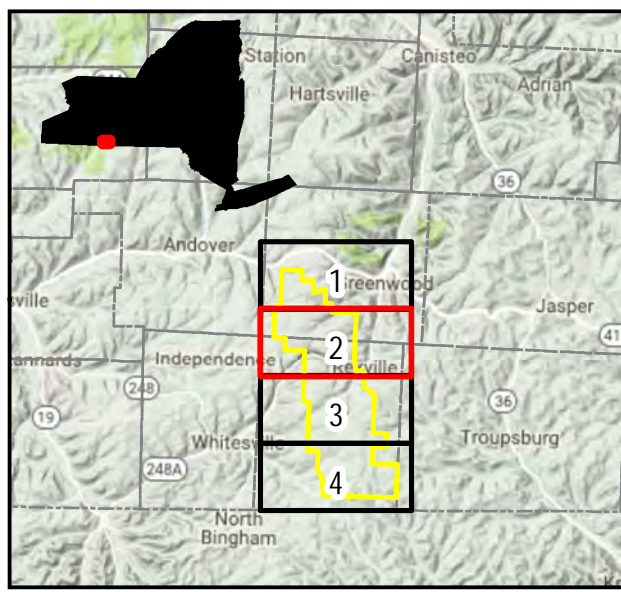
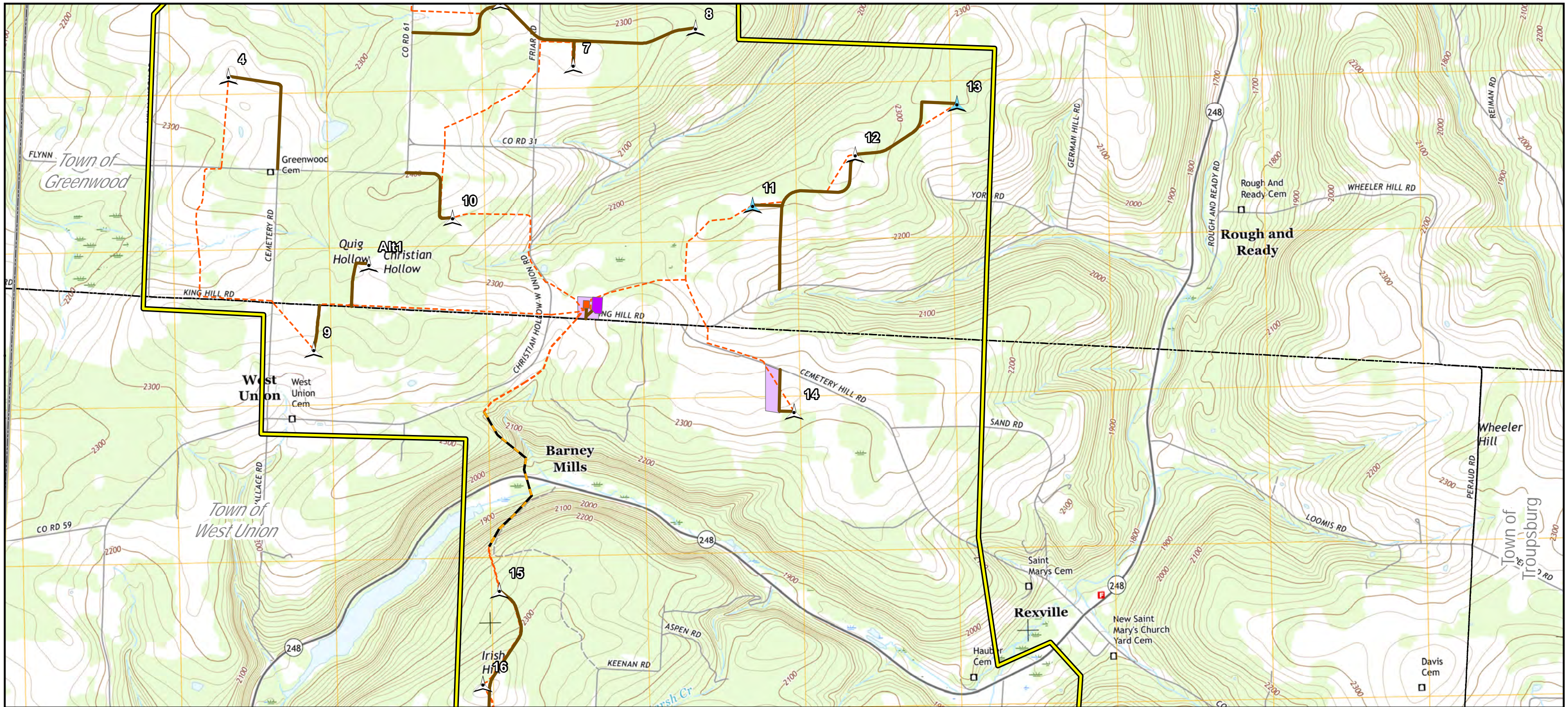
NEXTERA ENERGY RESOURCES

Eight Point Wind Energy Center

Figure 3-1
Project Component Locations

Page 1 of 4 Revised: 2/19/2018

TRC 215 Greenfield Pkwy
Liverpool, NY 13088



Legend

- 2.3 MW Proposed Turbine Location
- 3.43 MW Proposed Turbine Location
- Permanent Meteorological Towers
- Project Area
- Collection Substation
- O&M Building
- Laydown Yard
- Overhead Collection Line
- Underground Collection Line
- Proposed Access Road
- NY County
- Town Boundary

Towns of Greenwood & West Union
Steuben County, New York

Sources: ESRI, USGS, TRC, NextEra

0 1,000 2,000
Feet
1 inch = 2,000 feet

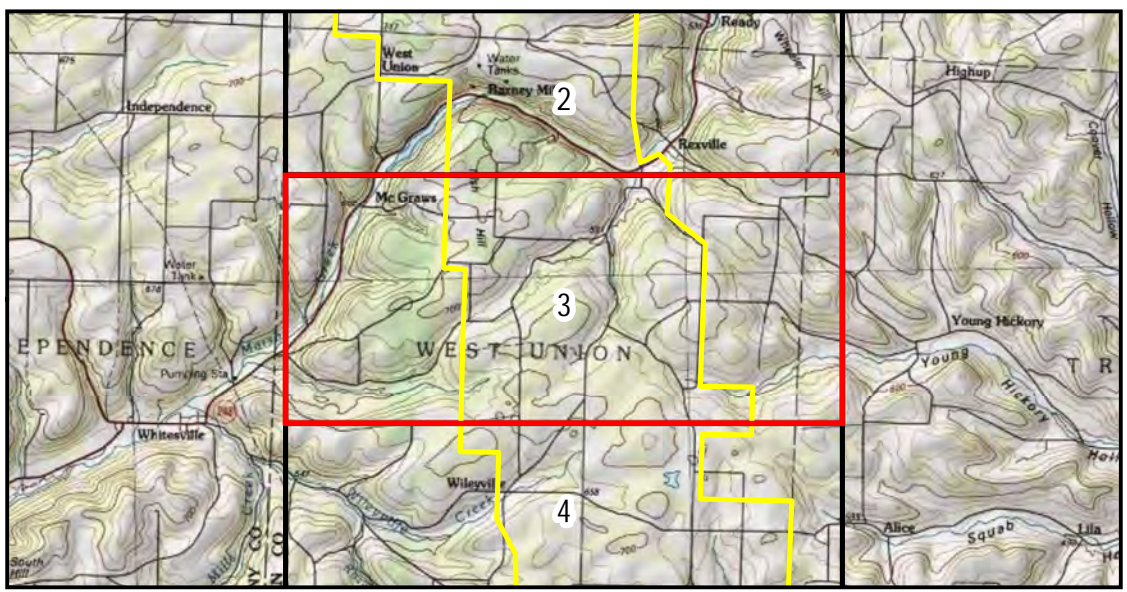
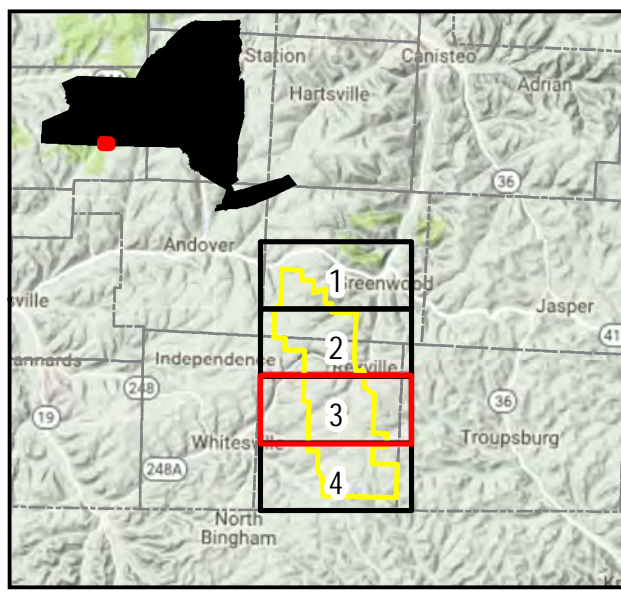
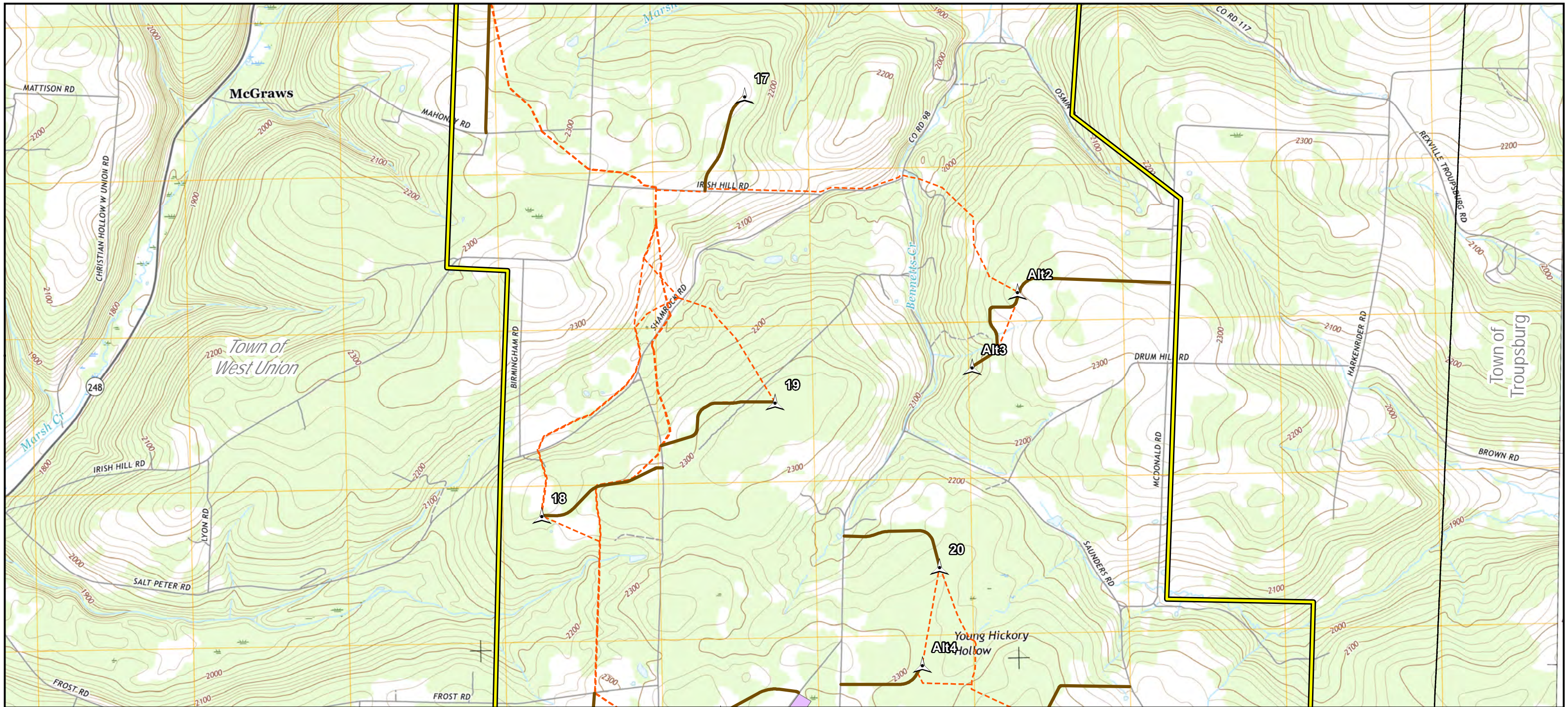
NEXTERA ENERGY RESOURCES

**Eight Point
Wind Energy Center**

Figure 3-1
Project Component Locations

Page 2 of 4 Revised: 2/19/2018

TRC 215 Greenfield Pkwy
Liverpool, NY 13088



Legend

- 2.3 MW Proposed Turbine Location
- 3.43 MW Proposed Turbine Location
- Permanent Meteorological Towers
- Project Area
- Collection Substation
- O&M Building
- Laydown Yard
- Overhead Collection Line
- Underground Collection Line
- Proposed Access Road
- NY County
- Town Boundary

Towns of Greenwood & West Union
Steuben County, New York

Sources: ESRI, USGS, TRC, NextEra

0 1,000 2,000
Feet
1 inch = 2,000 feet

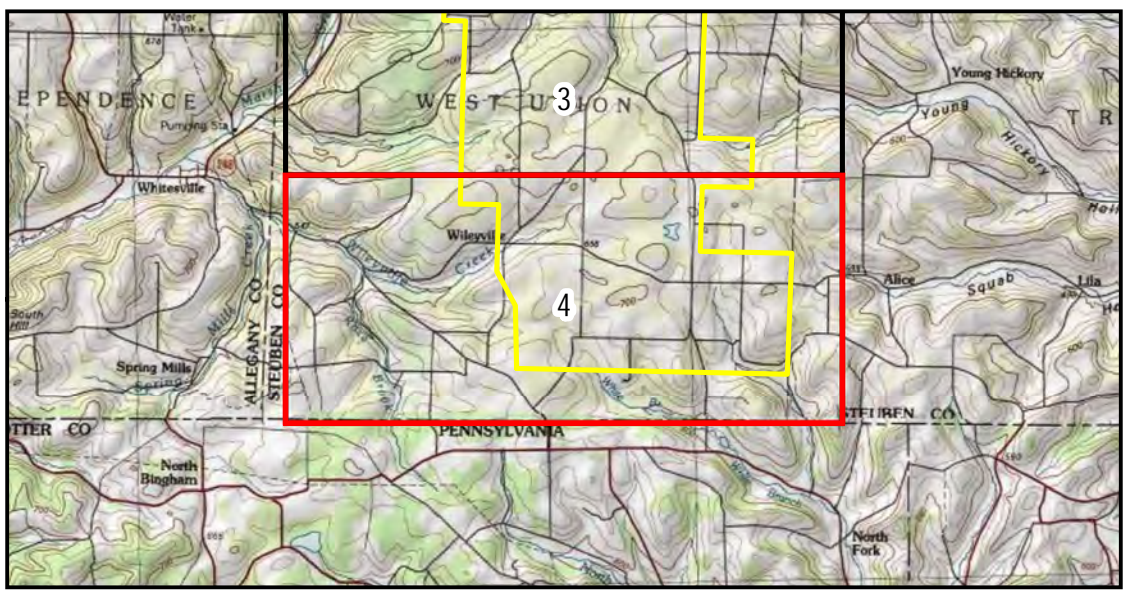
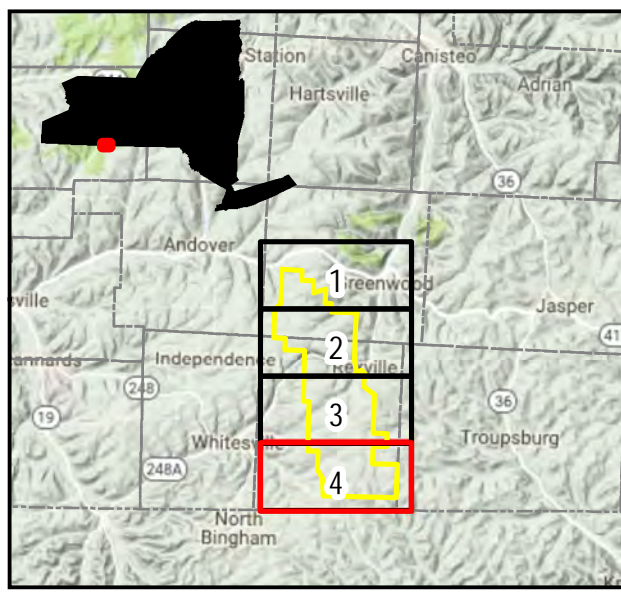
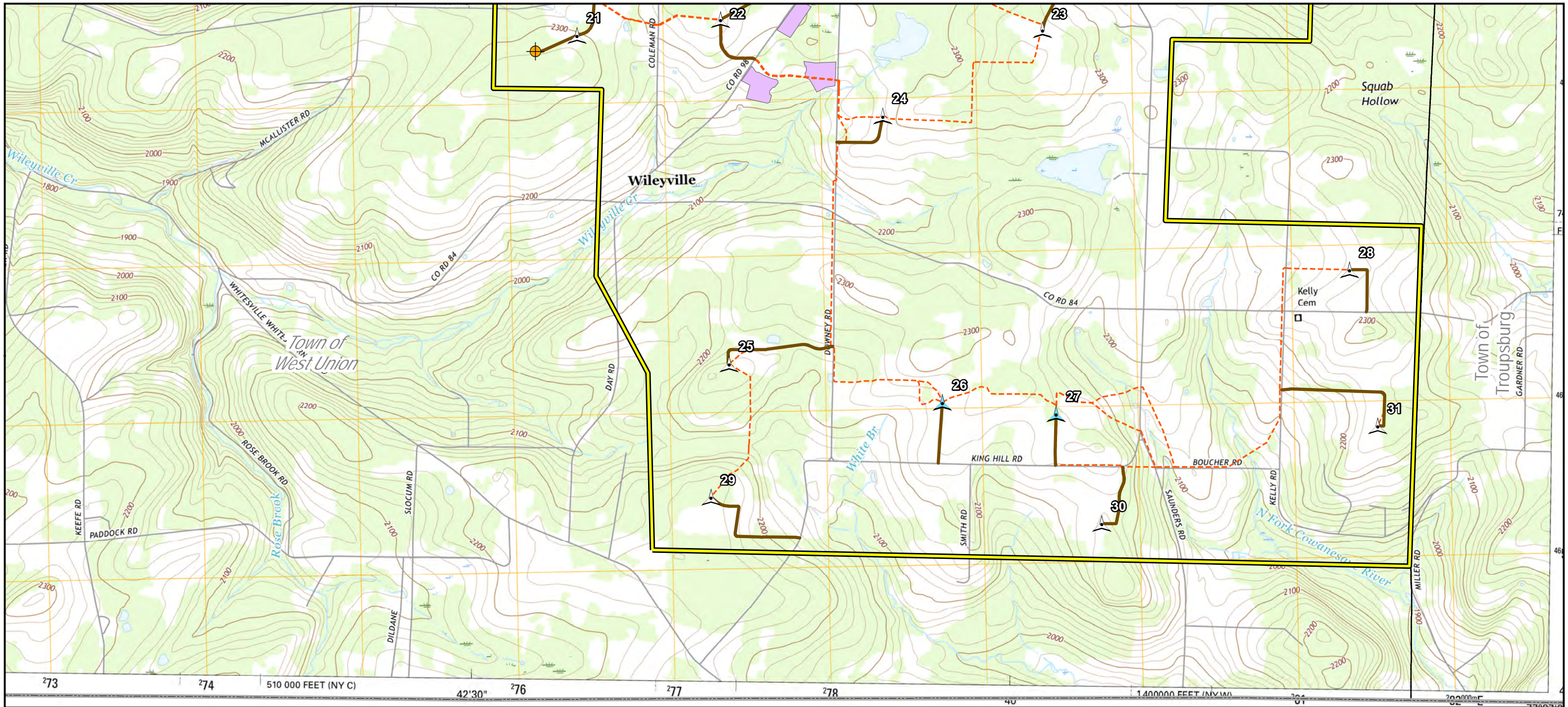
NEXTERA ENERGY RESOURCES

Eight Point Wind Energy Center

Figure 3-1
Project Component Locations

Page 3 of 4 Revised: 2/19/2018

TRC 215 Greenfield Pkwy
Liverpool, NY 13088



Legend

- 2.3 MW Proposed Turbine Location
- 3.43 MW Proposed Turbine Location
- Permanent Meteorological Towers
- Project Area
- Collection Substation
- O&M Building
- Laydown Yard
- Overhead Collection Line
- Underground Collection Line
- Proposed Access Road
- NY County
- Town Boundary

Towns of Greenwood & West Union
Steuben County, New York

Sources: ESRI, USGS, TRC, NextEra

0 1,000 2,000
Feet
1 inch = 2,000 feet

NEXTERA ENERGY RESOURCES

Eight Point Wind Energy Center

Figure 3-1
Project Component Locations

Page 4 of 4 Revised: 2/19/2018

TRC 215 Greenfield Pkwy
Liverpool, NY 13088